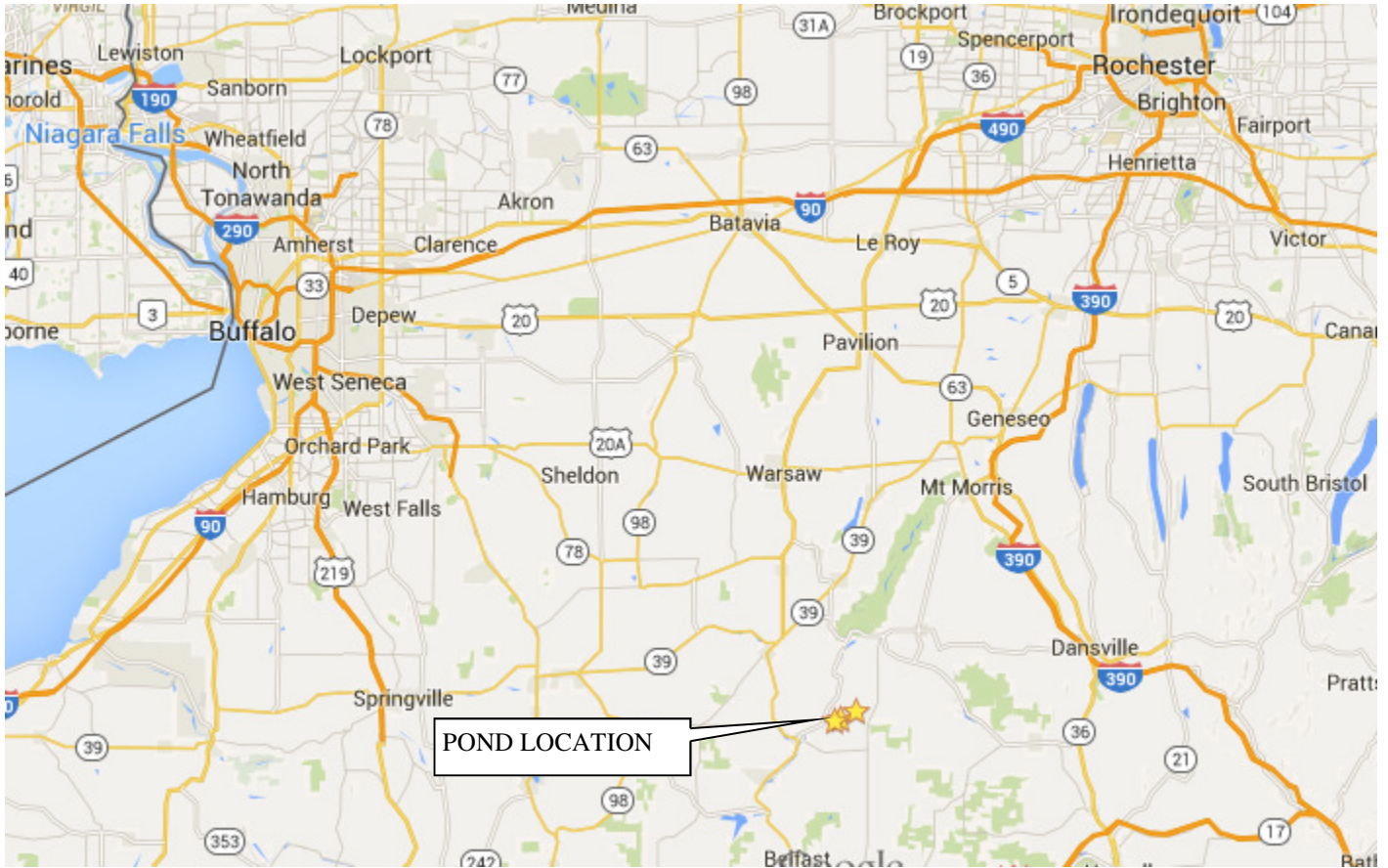
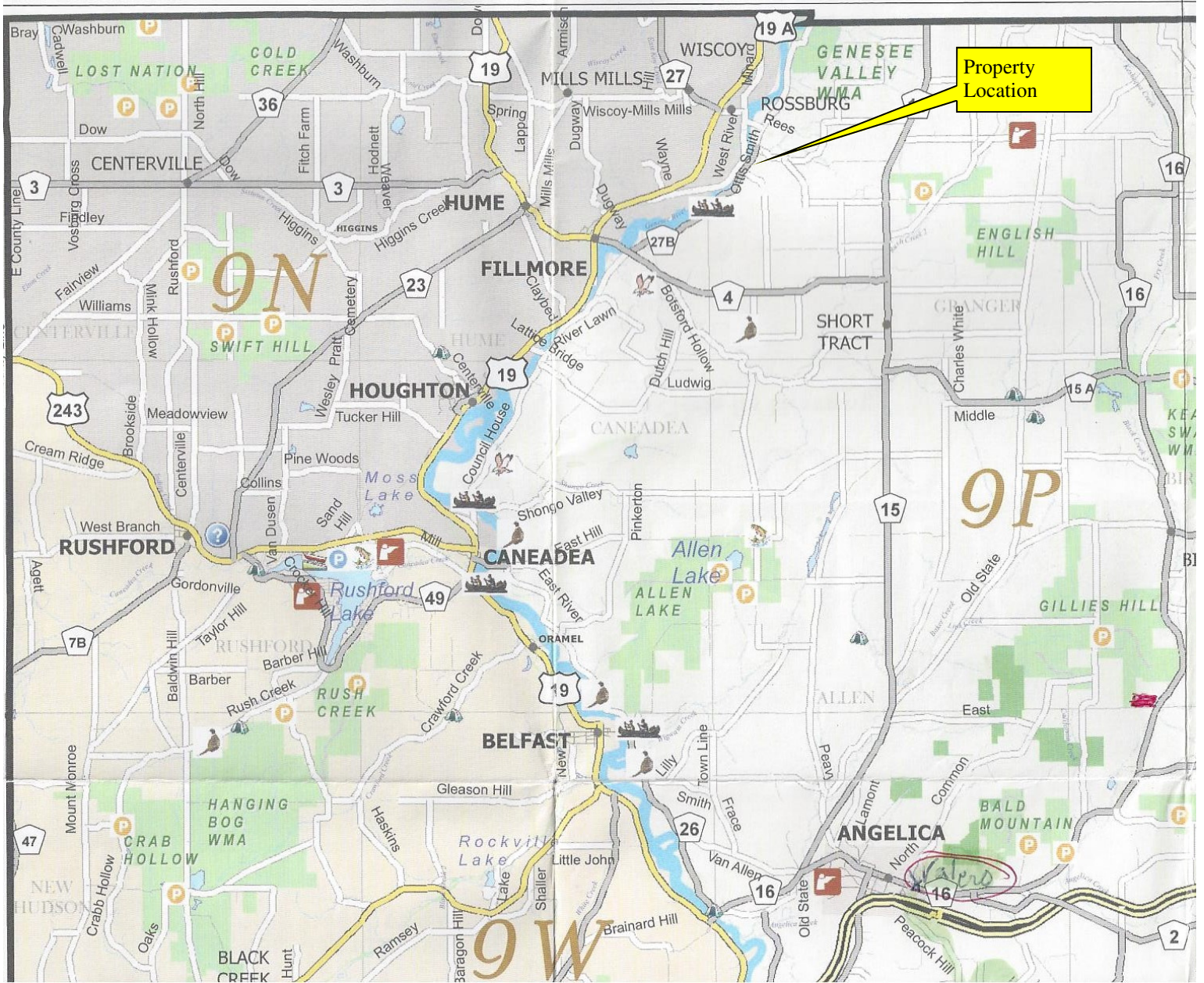


# LOCATION MAP



# Location Map





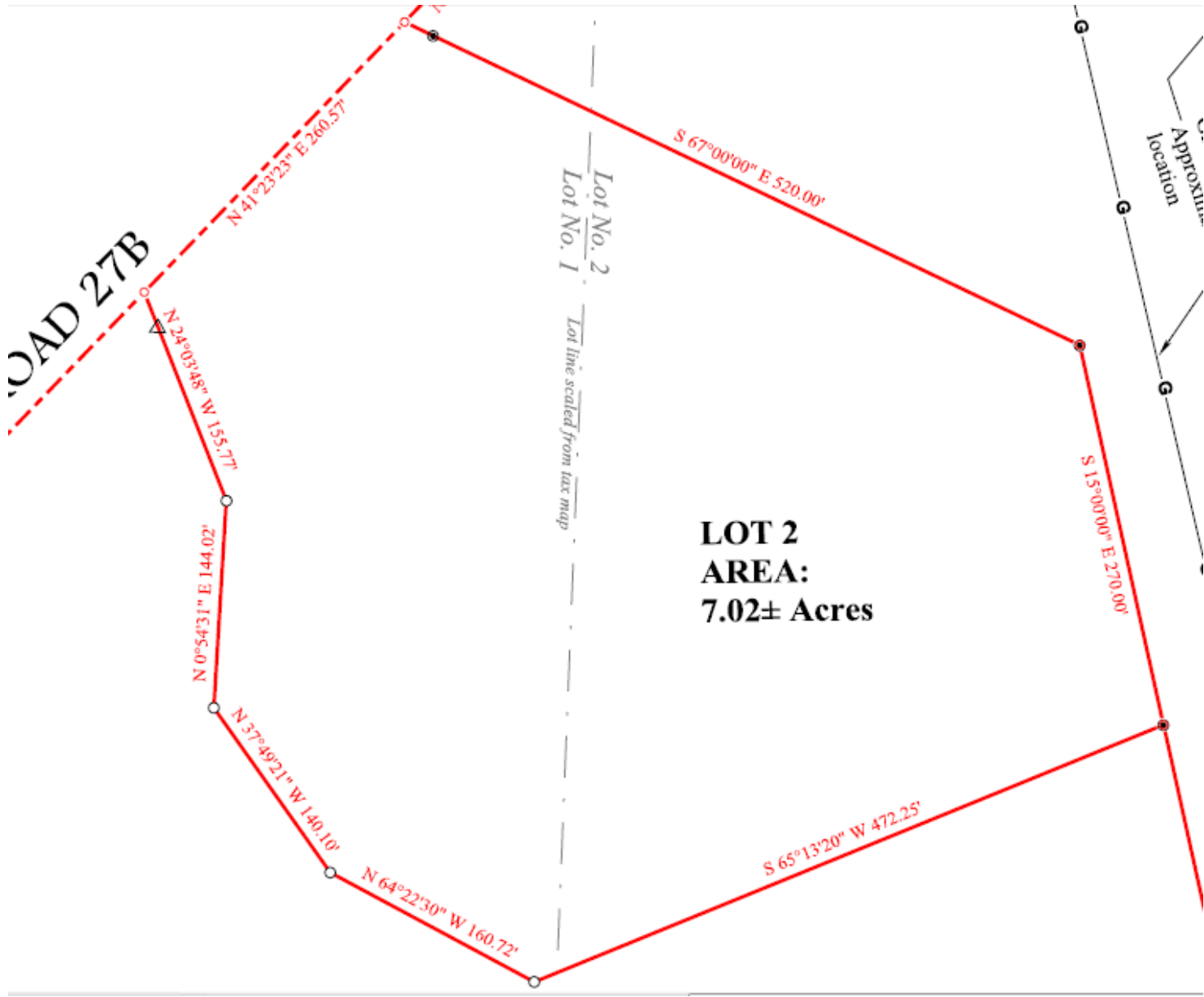
27B

Driveway to Building Site

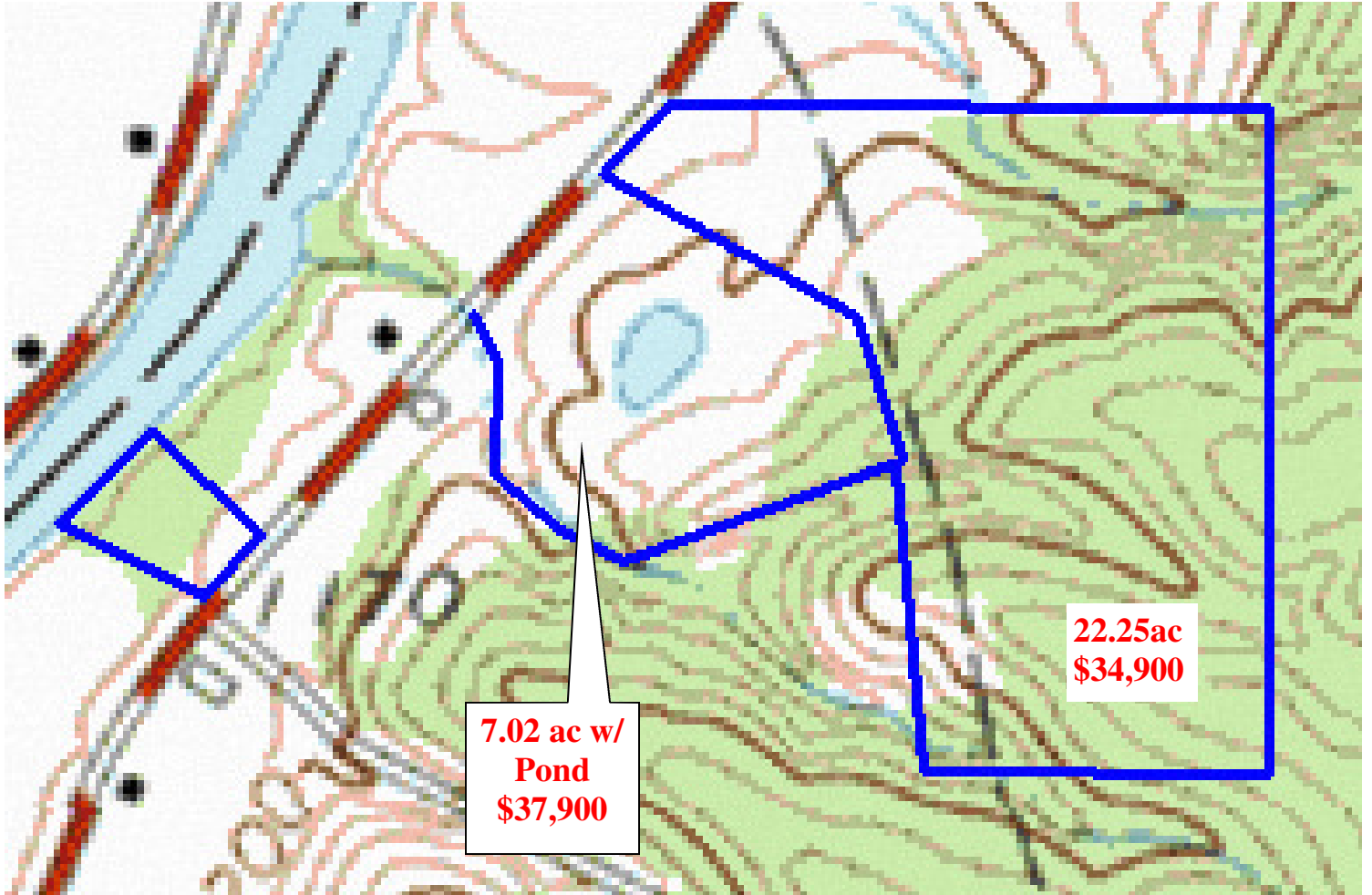
7.02 ac w/ Pond  
\$37,900

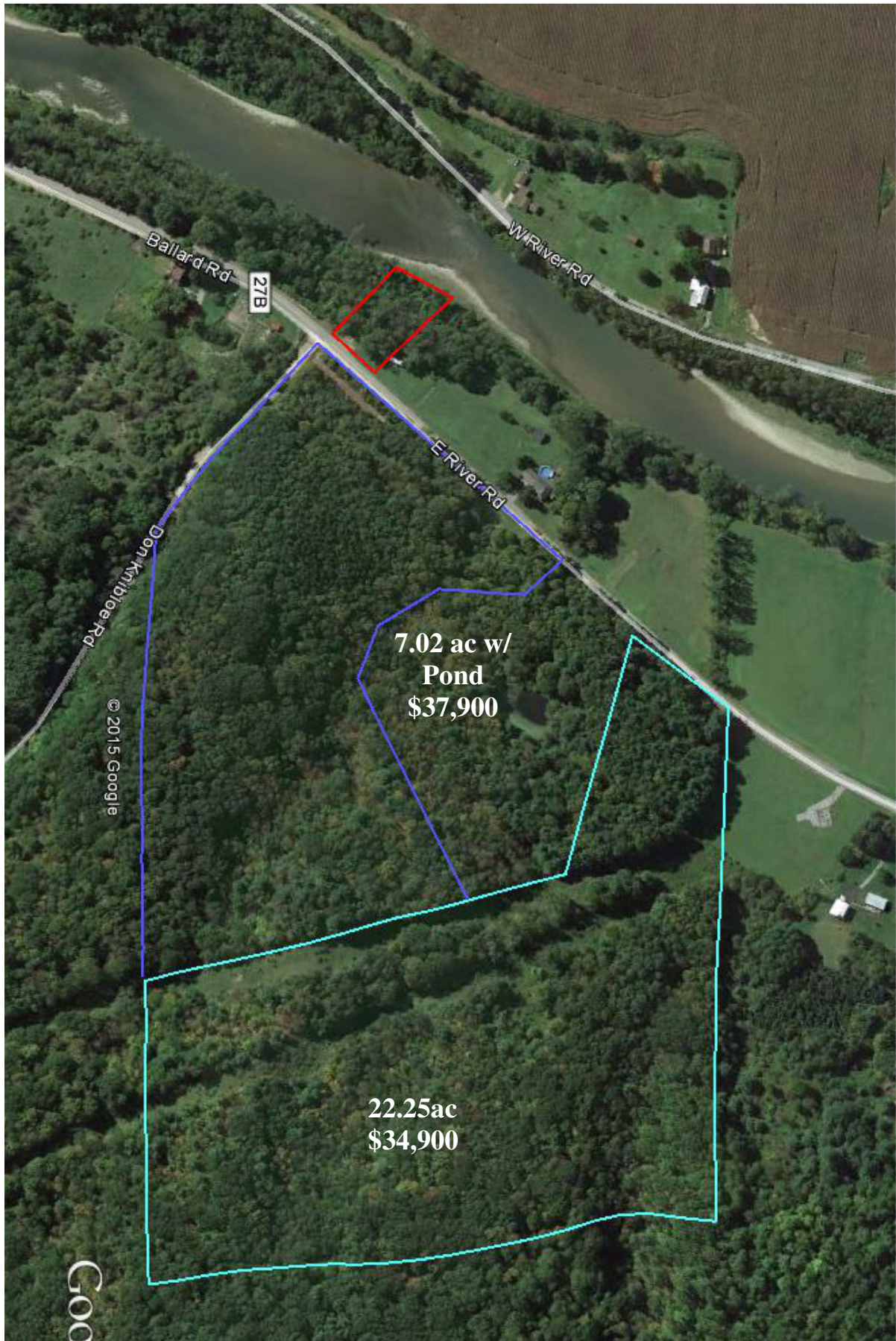
© 2015 Google

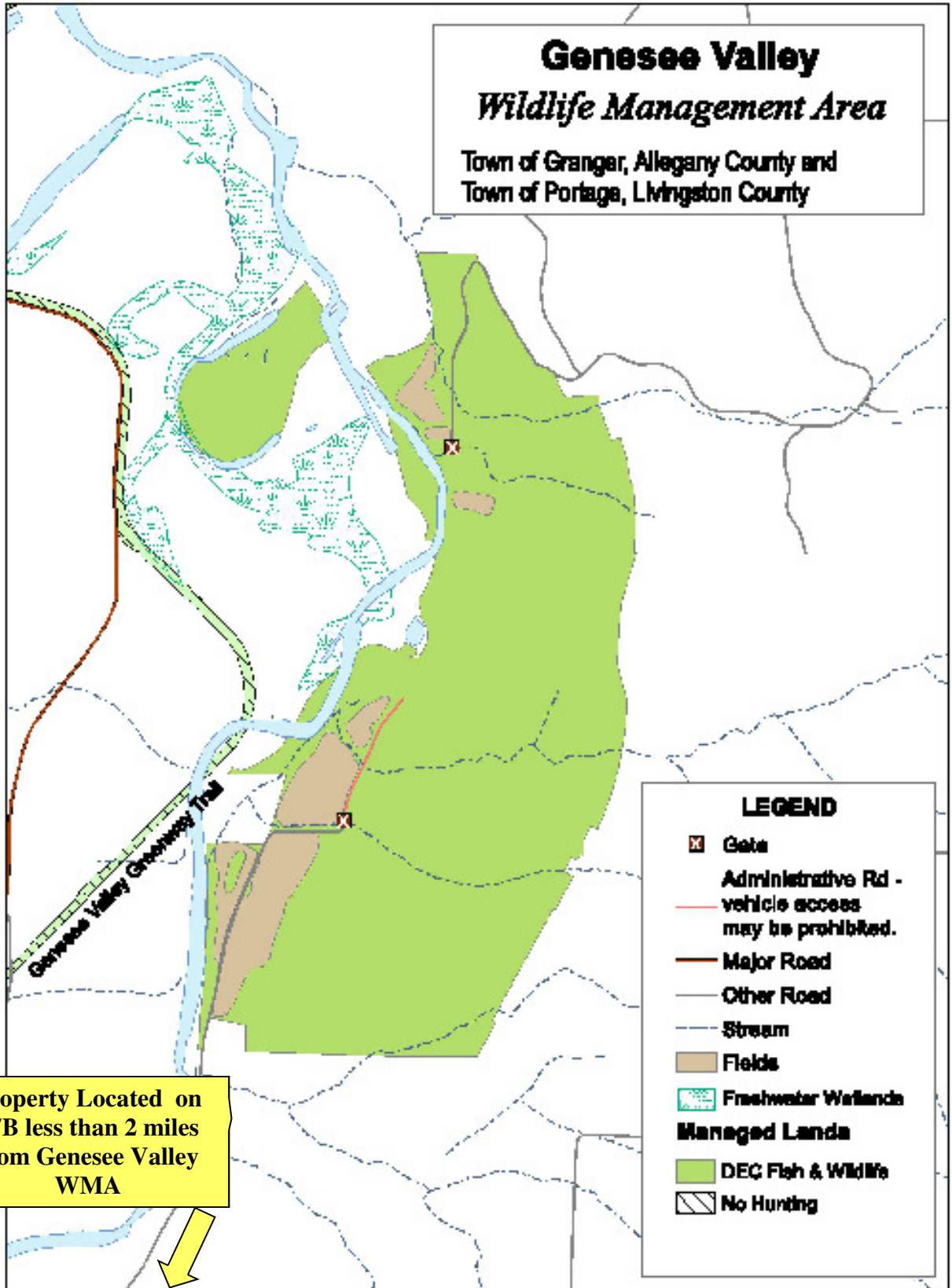
# Pond Tract Survey Map



TOPO MAP









## Genesee Valley Wildlife Management Area

[Genesee Valley Wildlife Management Area Map](#) || [Genesee Valley Wildlife Management Area Map \(PDF, 856 KB\)](#) || [Google Earth](#) || [State Lands Interactive Mapper](#)

**Size: 717 acres**

Genesee Valley WMA is located about five miles northeast of the Village of Fillmore, on the east side of the Genesee River, in the Town of Granger, Allegany County and the Town of Portage, Livingston County.

### Day Use Activities and Recreational Opportunities

- Fishing
- Hiking
- Hunting
- Trapping
- Wildlife Observation

A few activities are prohibited: off road vehicular travel, swimming, boating with motors and camping.

### Watchable Wildlife



The diverse habitat on the area is home to a variety of wildlife species. Some of the more common species are [beaver](#), muskrat, mink, raccoon, fox, squirrel, [deer](#), grouse, woodcock, [turkey](#) and a variety of song birds and waterfowl.



*Grasslands of Genesee Valley WMA*

### History

The area is in the Genesee River Valley which has low lands mixed with rolling hills characteristic for that part of the county. DEC acquired the area in 2001 as a gift from the Russell family.

### Management

The primary management objective for the area is to maintain high quality wildlife habitat through a regulated timber and grassland management plan. Several wildlife species utilize the area and benefit from these practices. Secondary management objectives are to protect and maintain special wildlife habitats that exist on the area such as: deer wintering areas, raptor nest sites, and the Genesee River corridor.

**For more information, call or write to:**

NYS DEC  
Region 9 Wildlife Manager  
182 East Union Street, Suite 3  
Allegany, NY 14706